

**CROWN INTERNATIONAL, INC.**  
 1718 W. MISHAWAKA RD. ELKHART IN. 46517 PHONE (219) 294-8800

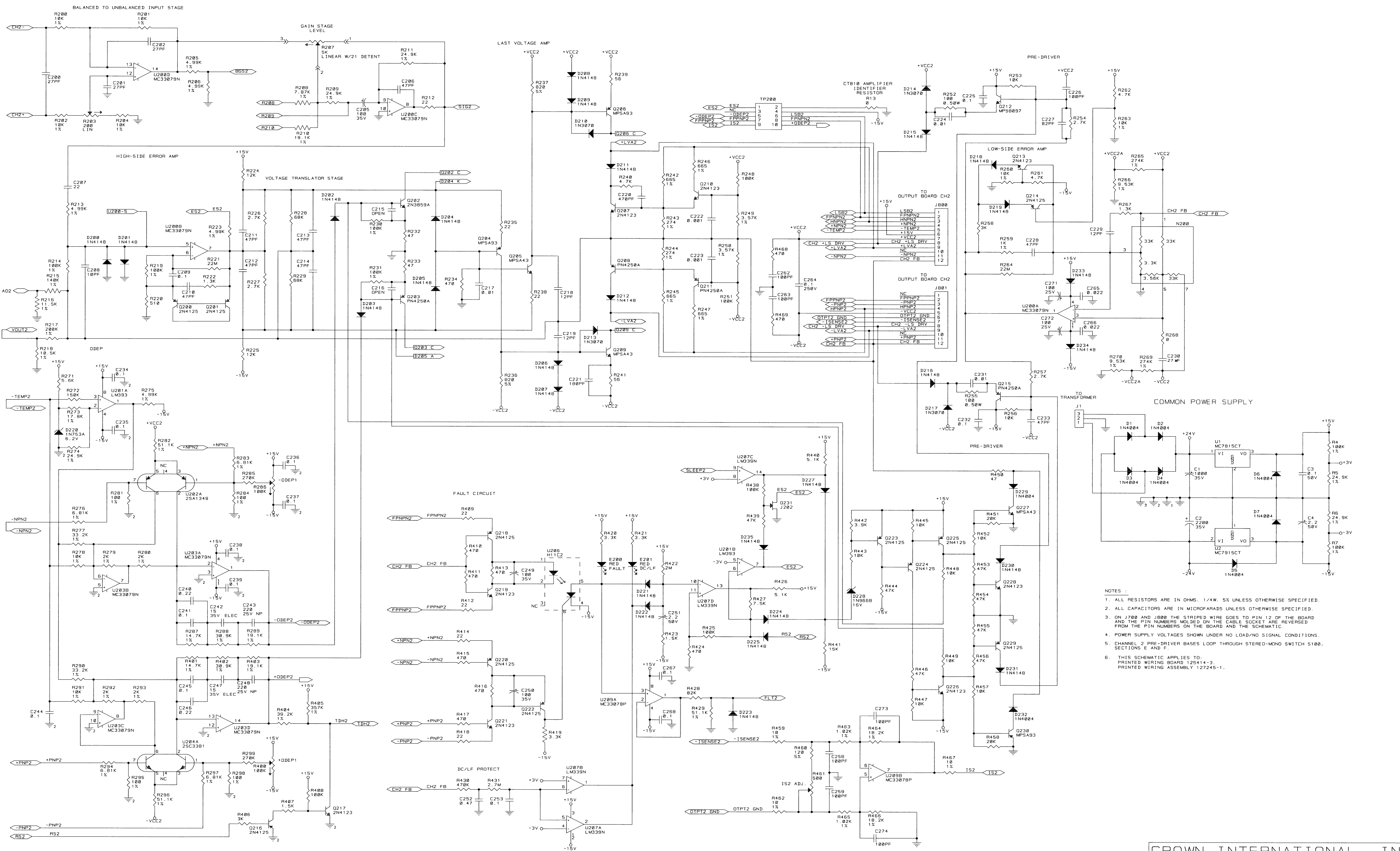
**SCHEM, MA2402 MAIN**

TOL. UNLESS SPECIFIED  
 X.XX = 10.02"  
 X.XXX = 10.010"  
 DRILLS = 10.003"

PRINTS TO	DRAWN BY	KLW	02-18-99	APPROVED BY:	DO NOT SCALE PRINT
G	CHECKED	JLW	2-19-99	ME	SUPERSEDES
	SCALE	NONE		EE	E.C.
	PROJ. #	MD439P0		PE	DWG. NO. SHEET 1 OF 2
	FILENAME:	127252.A.SCM		REV	127252

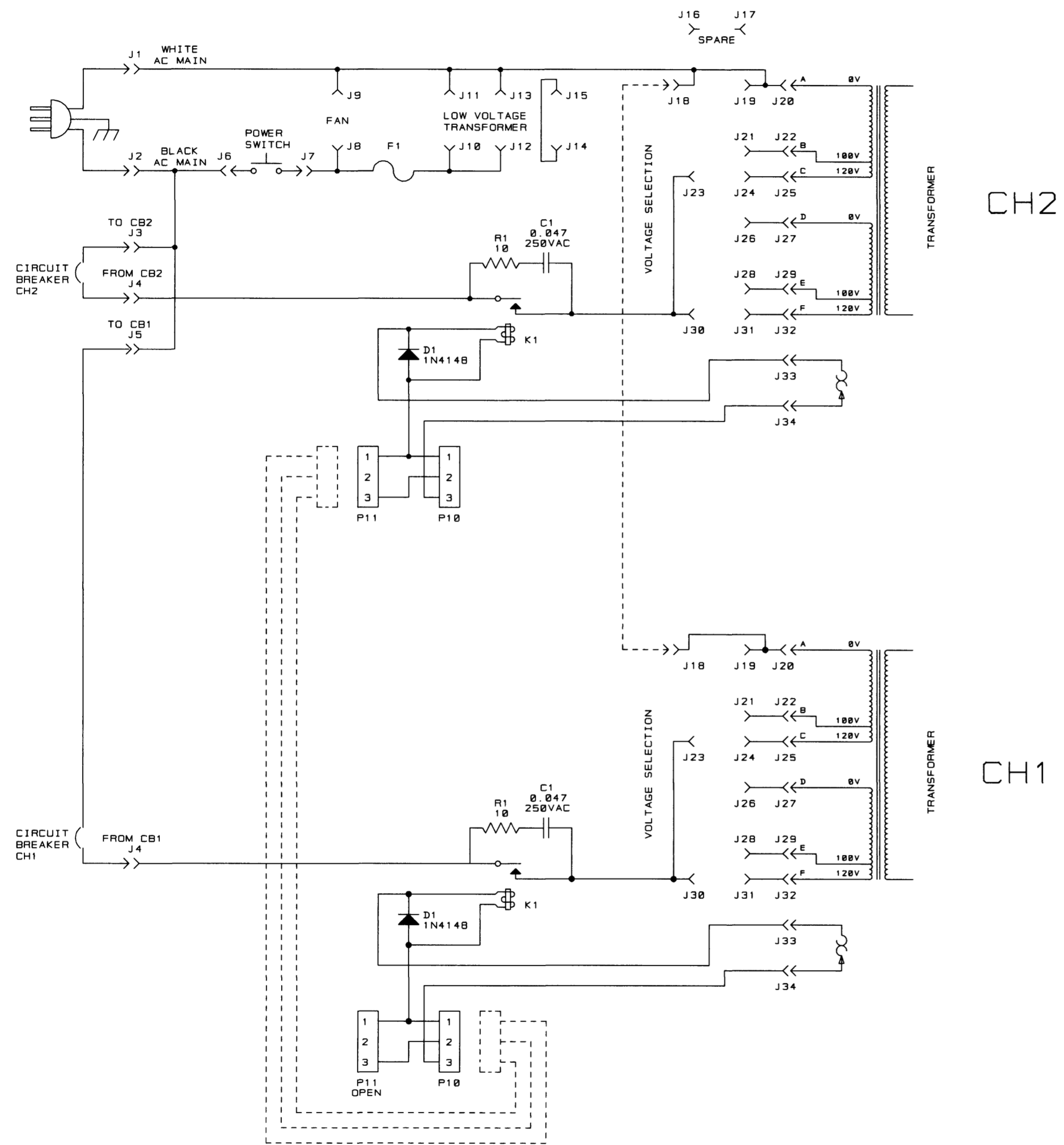
DATE: 2/19/99

THESE DRAWINGS AND SPECIFICATIONS ARE THE PROPERTY OF CROWN INTERNATIONAL, INC. AND SHALL NOT BE REPRODUCED, COPIED, OR USED AS THE BASIS FOR THE MANUFACTURE OR SALE OF APPARATUS OR DEVICES WITHOUT PERMISSION.



- NOTES:
1. ALL RESISTORS ARE IN OHMS, 1/4W, 5% UNLESS OTHERWISE SPECIFIED.
  2. ALL CAPACITORS ARE IN MICROFARADS UNLESS OTHERWISE SPECIFIED.
  3. ON J700 AND J800 THE STRIPED WIRE GOES TO PIN 12 OF THE BOARD AND THE PIN NUMBERS MOLDED ON THE CABLE SOCKET ARE REVERSED FROM THE PIN NUMBERS ON THE BOARD AND THE SCHEMATIC.
  4. POWER SUPPLY VOLTAGES SHOWN UNDER NO LOAD/NO SIGNAL CONDITIONS.
  5. CHANNEL 2 PRE-DRIVER BASES LOOP THROUGH STEREO-MONO SWITCH 5100, SECTIONS E AND F.
  6. THIS SCHEMATIC APPLIES TO:  
PRINTED WIRING BOARD 125414-3  
PRINTED WIRING ASSEMBLY 127245-1.

E. C. N.	ZONE	REV	DESCRIPTION	DATE	BY	APPROVAL			
						CK	CM	EE	PE
		A	INITIAL RELEASE FOR PRODUCTION.	01-27-99	KLW	JL	CB		MK
99E0077		B	SWAP CH1 AND CH2 NOMENCLATURE. UPDATED NOTE 3.	02-17-99	KLW	JL	CB		MK



LAST USED	NOT USED
C1	
D1	
F1	
J34	
K1	
P11	1-9
R1	

- NOTES:
- ALL RESISTORS ARE IN OHMS. 1/4W. 1%. UNLESS OTHERWISE SPECIFIED.
  - ALL CAPACITORS ARE IN MICROFARADS. UNLESS OTHERWISE SPECIFIED.
  - THIS SCHEMATIC APPLIES TO:  
PRINTED WIRING BOARD 127199-1.  
PRINTED WIRING ASSEMBLY 127200-1 CH2.  
PRINTED WIRING ASSEMBLY 127259-1 CH1.

**CROWN INTERNATIONAL, INC.**  
1718 W. MISHAWAKA RD. ELKHART IN. 46517 PHONE (219) 294-8000

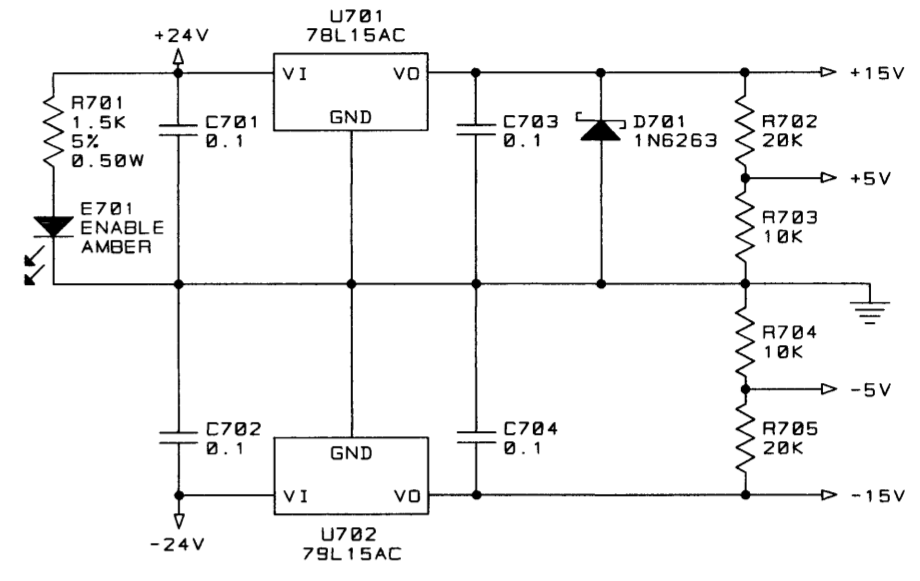
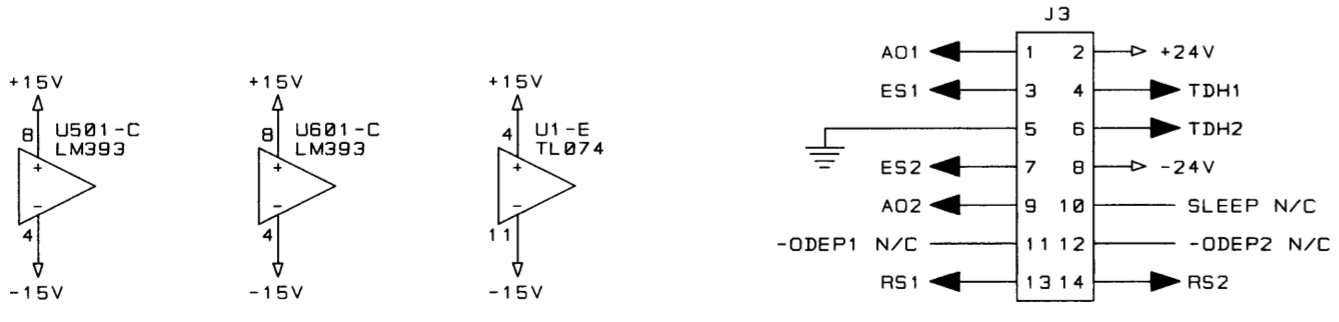
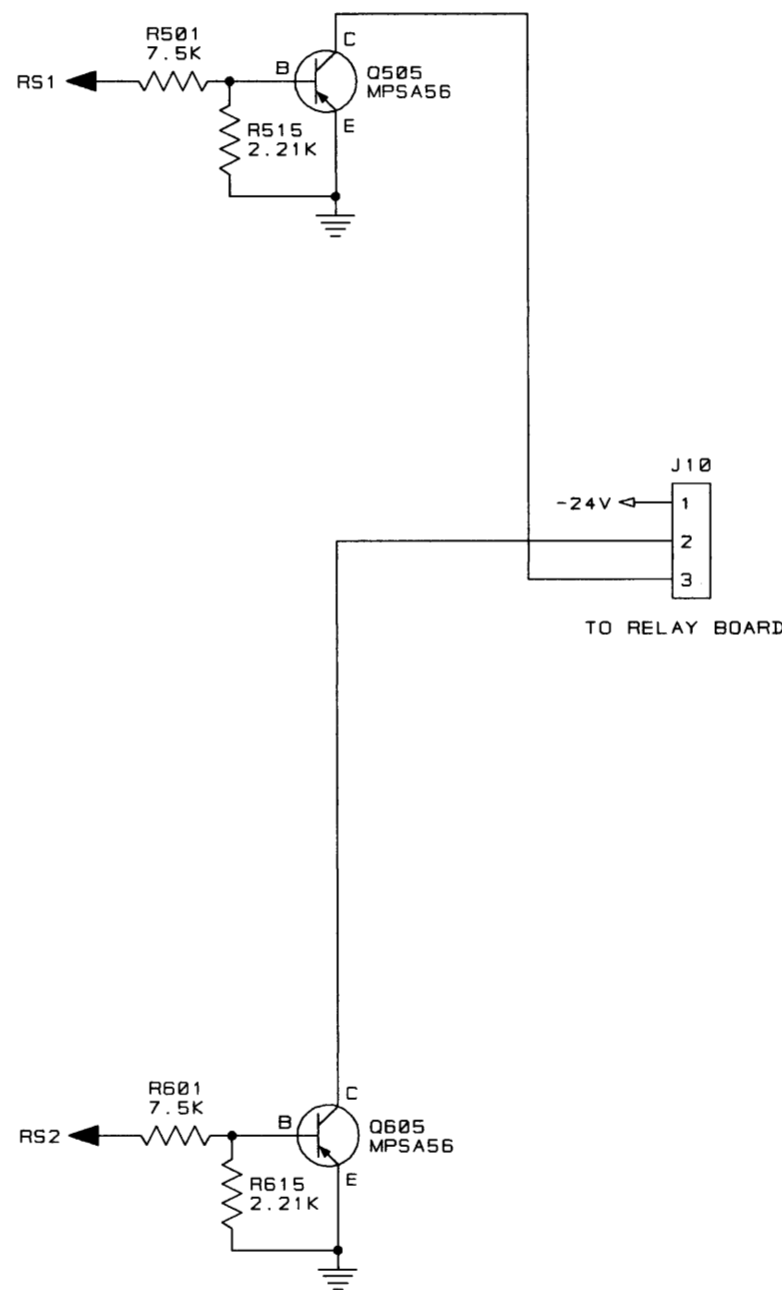
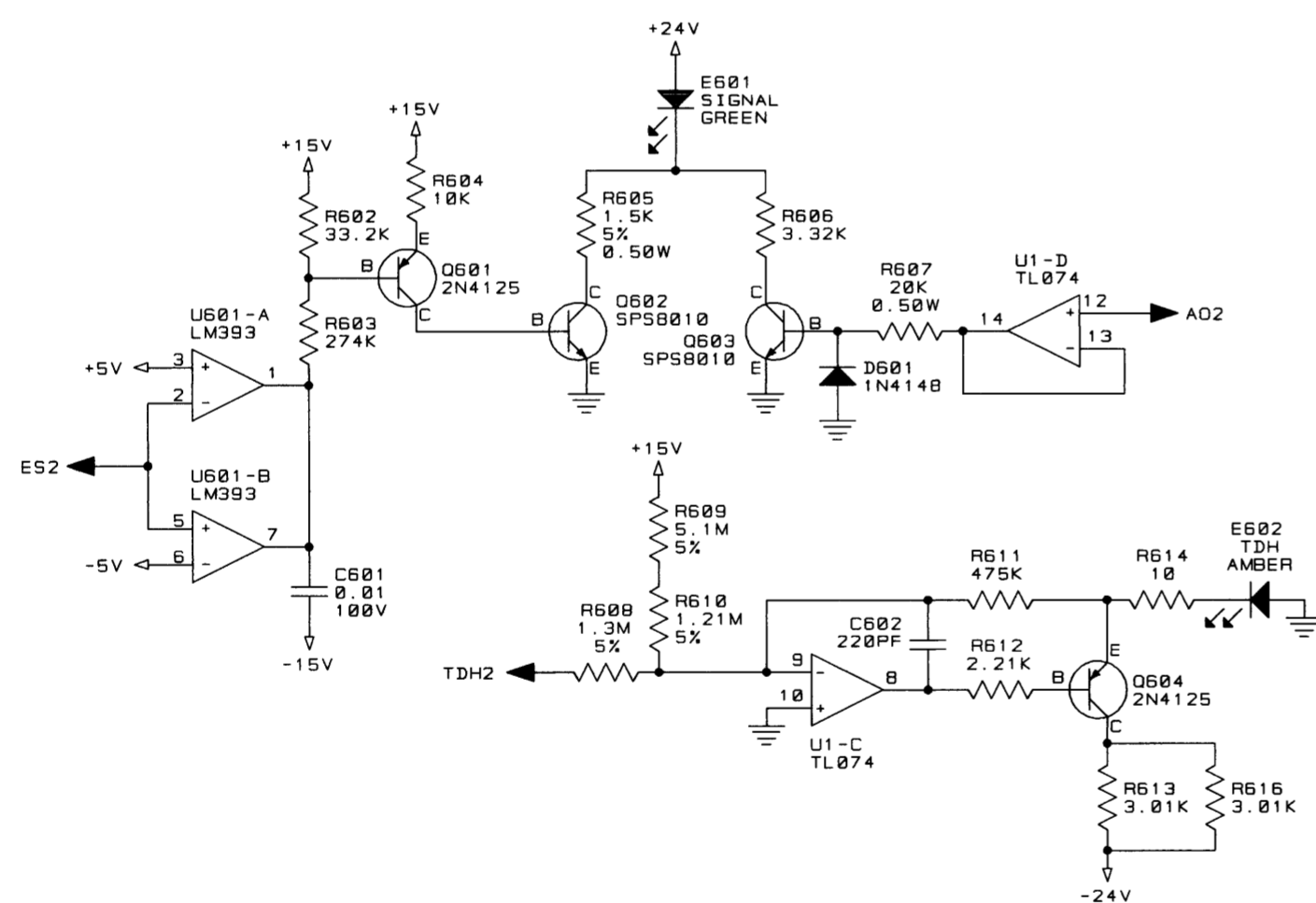
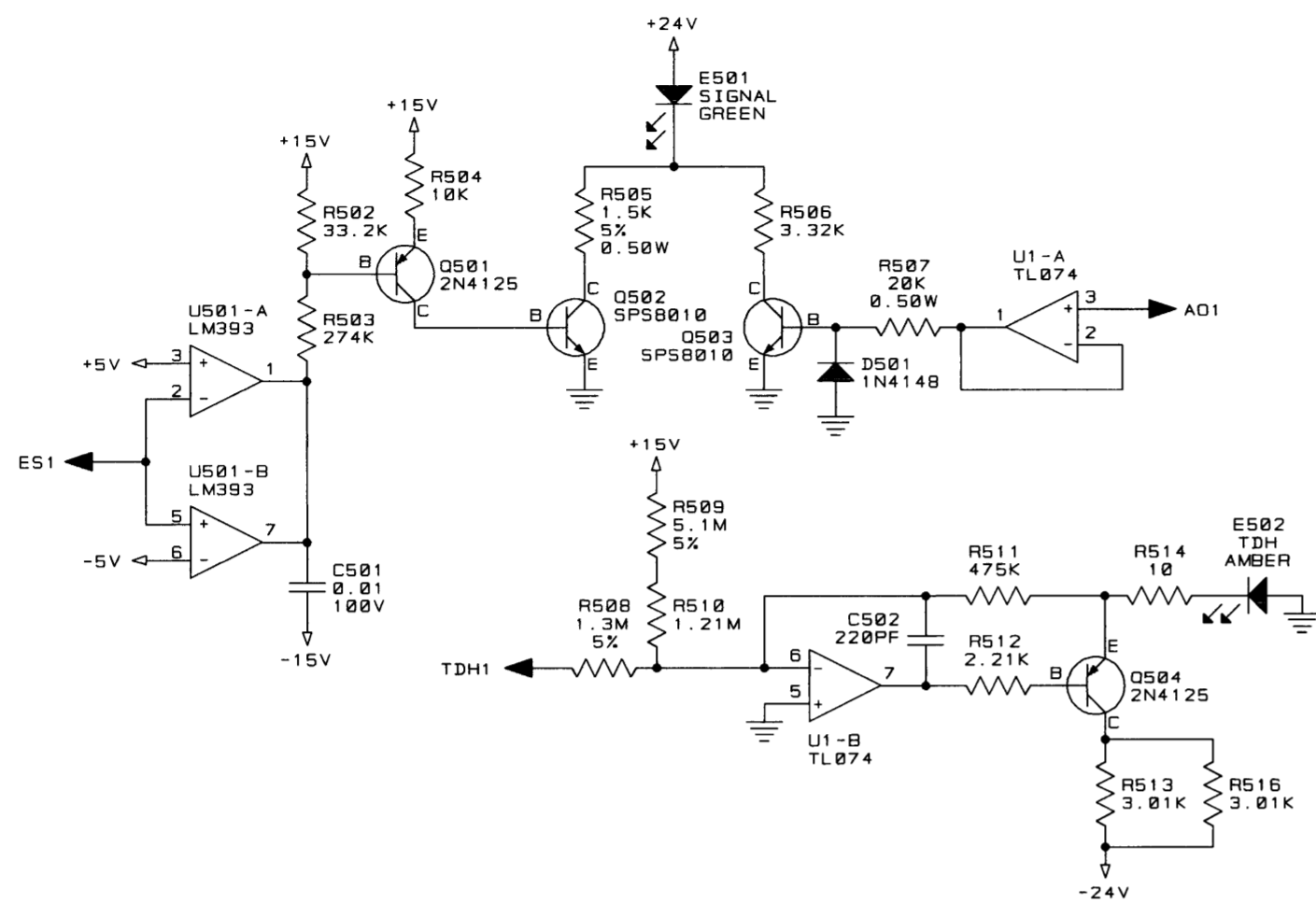
SCH. RELAY / VOLTAGE SELECT

PRINTS TO	DRAWN BY	KLW	01-27-99	APPROVED BY:	DO NOT SCALE PRINT
G	CHECKED	JL	1-28-99	ME	SUPERSEDES
	SCALE	NONE		EE	E. C.
	PROJ. #	MD439P0		PE MK	1-28-99
	FILENAME:	127198_B.SCM		NEXT ASSEMBLY:	
					127198

THESE DRAWINGS AND SPECIFICATIONS ARE THE PROPERTY OF CROWN INTERNATIONAL, INC. AND SHALL NOT BE REPRODUCED, COPIED, OR USED AS THE BASIS FOR THE MANUFACTURE OR SALE OF APPARATUS OR DEVICES WITHOUT PERMISSION.

REV (B)

E. C. N.	ZONE	REV	DESCRIPTION	DATE	BY	APPROVAL			
						CK	CM	EE	PE
		A	INITIAL RELEASE FOR PRODUCTION.	01-29-99	KLW	JAW	CB	EE	MK
99E0112		B	U1 WAS TL072. REVISED NOTE 3.	03-08-99	KLW	JAW	CB	EE	MK



LAST USED	NOT USED
C704	503-600, 603-700
D701	502-600, 602-700
E701	502-600, 602-700
J10	1, 2, 4-9
Q605	506-600
R705	516-600, 616-700
U702	2-500, 502-600, 602-700

- NOTES:
- ALL RESISTORS ARE IN OHMS, 1/4W, 1%, UNLESS OTHERWISE SPECIFIED.
  - ALL CAPACITORS ARE IN MICROFARADS, UNLESS OTHERWISE SPECIFIED.
  - THIS SCHEMATIC APPLIES TO:  
PRINTED WIRING BOARD 127176-2.  
PRINTED WIRING ASSEMBLY 127177-2.

**CROWN INTERNATIONAL, INC.**  
1718 W. MISHAWAKA RD. ELKHART IN. 46517 PHONE (219) 294-8000

**SCHEM. MA2402 DISPLAY**

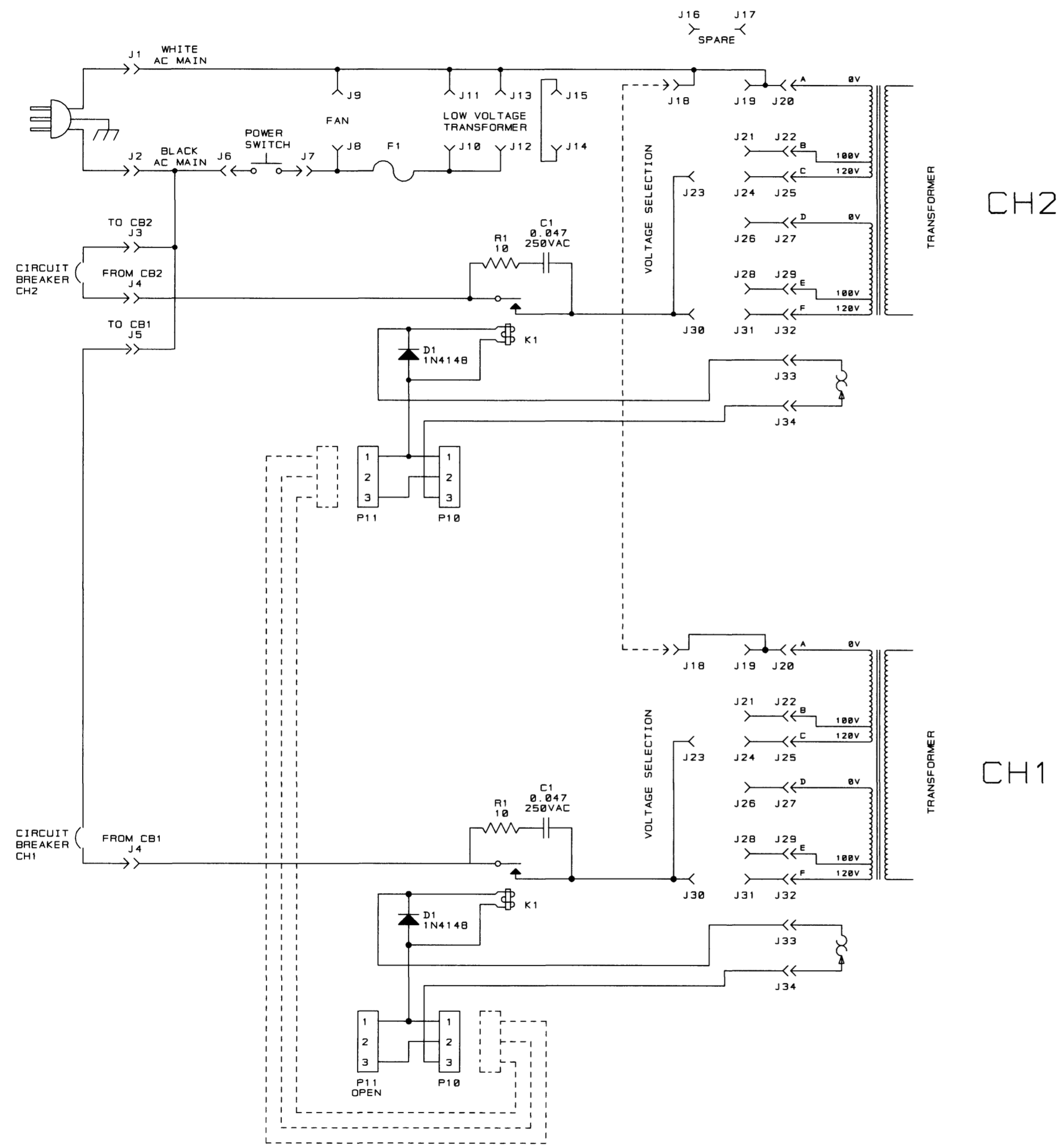
TOL. UNLESS SPECIFIED  
X.XX = ±0.02"  
X.XXX = ±0.010"  
DRILLS = ±0.003"

PRINTS TO	DRAWN BY	KLW	01-29-99	APPROVED BY:	DO NOT SCALE PRINT
G	CHECKED	JAW	02-03-99	ME	SUPERSEDES
	SCALE	NONE		EE	E. C.
	PROJ. #	MD439P0		PE MK	2/3/99
	FILENAME:	127175_B.SCM		NEXT ASSEMBLY:	
					127175

THESE DRAWINGS AND SPECIFICATIONS ARE THE PROPERTY OF CROWN INTERNATIONAL, INC. AND SHALL NOT BE REPRODUCED, COPIED, OR USED AS THE BASIS FOR THE MANUFACTURE OR SALE OF APPARATUS OR DEVICES WITHOUT PERMISSION.

REV (B)

E. C. N.	ZONE	REV	DESCRIPTION	DATE	BY	APPROVAL			
						CK	CM	EE	PE
		A	INITIAL RELEASE FOR PRODUCTION.	01-27-99	KLW	JL	CB		MK
99E0077		B	SWAP CH1 AND CH2 NOMENCLATURE. UPDATED NOTE 3.	02-17-99	KLW	JL	CB		MK



LAST USED	NOT USED
C1	
D1	
F1	
J34	
K1	
P11	1-9
R1	

- NOTES:
- ALL RESISTORS ARE IN OHMS. 1/4W. 1%. UNLESS OTHERWISE SPECIFIED.
  - ALL CAPACITORS ARE IN MICROFARADS. UNLESS OTHERWISE SPECIFIED.
  - THIS SCHEMATIC APPLIES TO:  
PRINTED WIRING BOARD 127199-1.  
PRINTED WIRING ASSEMBLY 127200-1 CH2.  
PRINTED WIRING ASSEMBLY 127259-1 CH1.

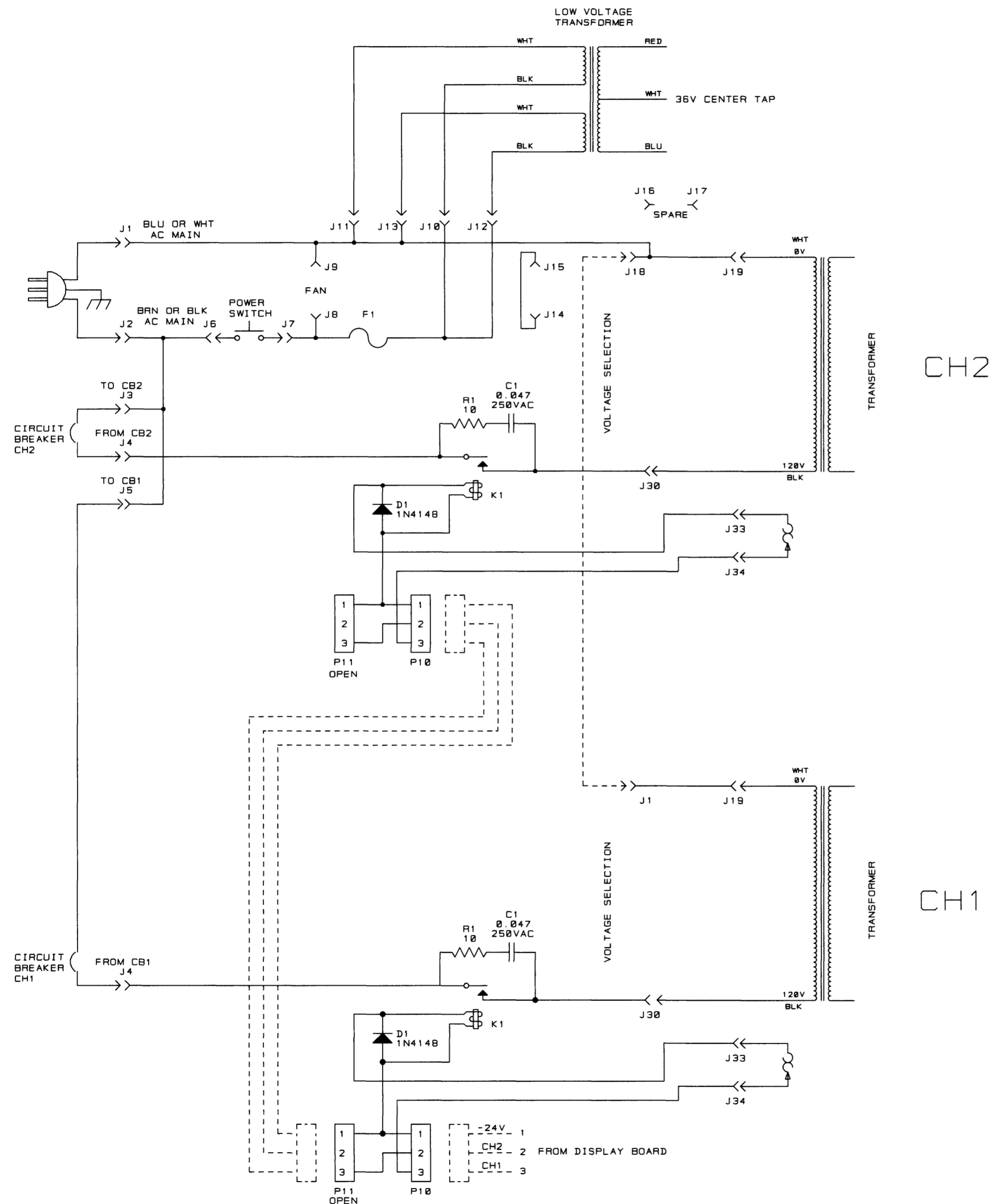
**CROWN INTERNATIONAL, INC.**  
1718 W. MISHAWAKA RD. ELKHART IN. 46517 PHONE (219) 294-8000

**SCH. RELAY / VOLTAGE SELECT** TOL. UNLESS SPECIFIED  
X.XX = ±0.02"  
X.XXX = ±0.010"  
DRILLS = ±0.003"

PRINTS TO	DRAWN BY	KLW	01-27-99	APPROVED BY:	DO NOT SCALE PRINT
G	CHECKED	JL	1-28-99	ME	SUPERSEDES
	SCALE	NONE		EE	E. C.
	PROJ. #	MD439P0		PE MK	1-28-99
	FILENAME:	127198_B.SCM		NEXT ASSEMBLY:	
					127198
					(B)

THESE DRAWINGS AND SPECIFICATIONS ARE THE PROPERTY OF CROWN INTERNATIONAL, INC. AND SHALL NOT BE REPRODUCED, COPIED, OR USED AS THE BASIS FOR THE MANUFACTURE OR SALE OF APPARATUS OR DEVICES WITHOUT PERMISSION.

E.C.N.	ZONE	REV	DESCRIPTION	DATE	BY	APPROVAL			
		A	INITIAL RELEASE FOR PRODUCTION.	04-20-99	JAW	CK	CM	EE	PE
						KW	SL	N/A	ME



LAST USED	NOT USED
C1	
D1	
F1	
J34	
K1	
P11	1-9
R1	

- NOTES:
- ALL RESISTORS ARE IN OHMS, 1/4W, 1%, UNLESS OTHERWISE SPECIFIED.
  - ALL CAPACITORS ARE IN MICROFARADS, UNLESS OTHERWISE SPECIFIED.
  - THIS SCHEMATIC APPLIES TO:  
PRINTED WIRING BOARD 127199-1.  
PRINTED WIRING ASSEMBLY 127477-1 CH2.  
PRINTED WIRING ASSEMBLY 127476-1 CH1.

CROWN INTERNATIONAL, INC.  
1718 W. MISHAWAKA RD. ELKHART IN, 46517 PHONE (219) 294-8000

SCH. MA2402 DOM TOP LEVEL

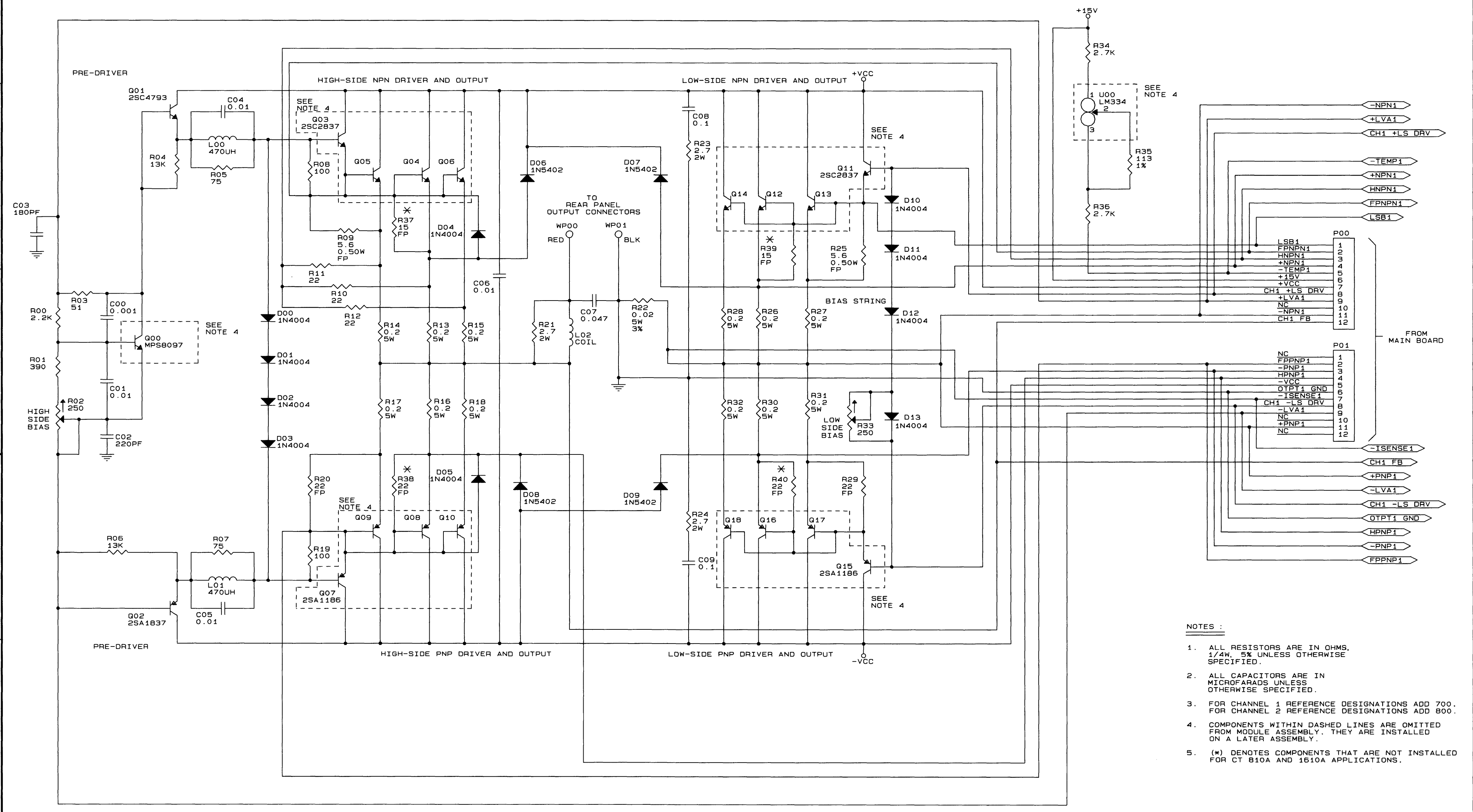
TOL. UNLESS SPECIFIED  
X.XX = ±0.02"  
X.XXX = ±0.010"  
DRILLS = ±0.003"

PRINTS TO	DRAWN BY	JAW	04-20-99	APPROVED BY:	DO NOT SCALE PRINT
G	CHECKED	KW	04-20-99	ME N/A N/A	SUPERSEDES
	SCALE	NONE		EE N/A N/A	E.C.
	PROJ. #	MD439P0		PE MK 4/21/99	DWG. NO.
	FILENAME:	127494_A.SCM		NEXT ASSEMBLY:	127494

THESE DRAWINGS AND SPECIFICATIONS ARE THE PROPERTY OF CROWN INTERNATIONAL, INC. AND SHALL NOT BE REPRODUCED, COPIED, OR USED AS THE BASIS FOR THE MANUFACTURE OR SALE OF APPARATUS OR DEVICES WITHOUT PERMISSION.

REV (A)

E.C.	ZONE	REV	DESCRIPTION	DATE	BY	APPROVALS				
						CK	ME	EE	PE	
		(A)	INITIAL RELEASE	05/30/97	LCD	KW				
		(B)	RECONNECTED R23 & R24 TO GROUND.	12-02-97	TLM					ES
		(C)								



- NOTES :**
1. ALL RESISTORS ARE IN OHMS, 1/4W, 5% UNLESS OTHERWISE SPECIFIED.
  2. ALL CAPACITORS ARE IN MICROFARADS UNLESS OTHERWISE SPECIFIED.
  3. FOR CHANNEL 1 REFERENCE DESIGNATIONS ADD 700. FOR CHANNEL 2 REFERENCE DESIGNATIONS ADD 800.
  4. COMPONENTS WITHIN DASHED LINES ARE OMITTED FROM MODULE ASSEMBLY. THEY ARE INSTALLED ON A LATER ASSEMBLY.
  5. (\*) DENOTES COMPONENTS THAT ARE NOT INSTALLED FOR CT 810A AND 1610A APPLICATIONS.

LAST USED	OBSOLETE
C09	
D13	
L02	
Q18	
R40	
U00	

**CROWN INTERNATIONAL, INC.**  
 1718 WEST MISHAWAKA ROAD ELKHART, IN. 46517 PHONE (219) 294-8000

**SCHEMATIC; CT810A/1610A OUTPUT**

PRINTS TO	G				
DRAWN	LCD	05/30/97	APPROVED BY :	DO NOT SCALE PRINT	
CHECKED	KW	05-30-97	ME	SUPERSEDES	
SCALE	NONE		EE PW	06-02-97	E.C.
PROJ #	MD360D0		PE TS	06-02-97	DWG. NO. SHEET 1 OF 1
FILENAME:	10277308.SCM		NEXT ASSEMBLY:		102773

THESE DRAWINGS AND SPECIFICATIONS ARE THE PROPERTY OF CROWN INTERNATIONAL, INC. AND SHALL NOT BE REPRODUCED, COPIED, OR USED AS THE BASIS FOR THE MANUFACTURE OR SALE OF APPARATUS OR DEVICES WITHOUT PERMISSION.