

**AE Techron's 7114 / 7118 Rack Mount Kit** enables a 7114 or 7118 amplifier to be securely mounted into a 2U, full-width rack space while providing a storage space for tools or accessories next to the amplifier.\*

The 7114 / 7118 Rack Mount Kit is manufactured using 18GA galvanealed steel with a durable black powdercoat finish to match the 7114 / 7118 amplifier.

The 7114 / 7118 Rack Mount Kit includes the rack shelf, two rack shelf inserts, and assembly hardware. Rack-mounting hardware and amplifier are not included.

Recommended weight limit for the rack storage space is 25 lbs. (11.34 kg), excluding amplifier.

## Installation

### Accessory Kit Contents:

(1) Rack Shelf, (2) Shelf Inserts, (12) Phillips-head screws. See Figure 1.

**Tools Required:** #1 Phillips screwdriver

Complete the following steps to assemble the 7114 / 7118 Rack Mount Kit.

1. Use a Phillips screwdriver to remove the carrying handle and four feet from the 7114/7118 amplifier. See Figure 2.
2. Place the 7114/7118 amplifier upside down on a flat surface and position the rack shelf over the amplifier as shown in Figure 3 for final amplifier mounting position on the left side of the shelf. Note that the amplifier can be mounted on either the left or right side of the rack shelf, according to your preferences. Position the upside down amplifier to the left of the inverted rack shelf for final amplifier mounting position on the right side of the shelf.
3. Insert the two shelf inserts into the space between the amplifier chassis and the shelf side, as shown in Figure 4. Position one insert near the amplifier front, and the other near the amplifier back.



## Features

- Provides for secure rack mounting of an AE Techron 7114 or 7118 amplifier.
- Also provides a storage area next to the amplifier for tools or accessories.
- Durable, matching black powdercoat finish.

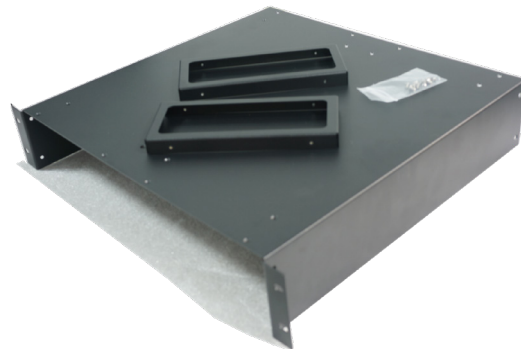


Figure 1 - 7114 / 7118 Rack Mount Kit contents



Figure 2 - 7114/7118 amplifier with handle and feet removed

4. Insert and tighten eight of the Phillips-head screws into the shelf bottom at the locations shown in Figure 5.
5. Insert and tighten four of the Phillips-head screws into the shelf side to secure the inserts as shown in Figure 6.
6. Turn the amplifier and shelf assembly right-side up. Insert the assembly into a 2U rack space and secure with standard rack-mounting hardware (not included).

## Specifications

**Construction:** 18GA galvanealed steel with a carbide black powercoat finish

**Dimensions(HxWxD):** 3.48 in. x 19.00 in. x 16.81 in. (88.39 mm x 482.6 mm x 426.97 mm).



Figure 3 - Positioning the rack shelf



Figure 4 - Positioning the rack inserts



Figure 5 - Screw locations on shelf bottom



Figure 5 - Screw locations on shelf side